

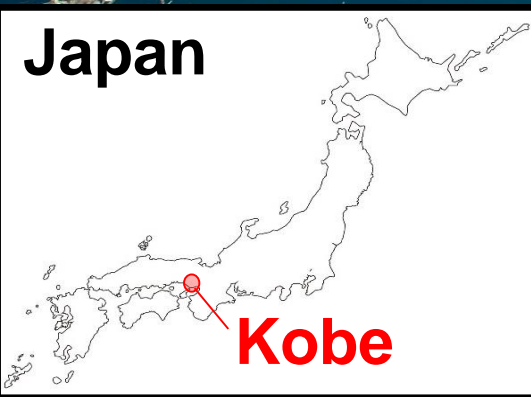
Overview of Kobe Port

BE KOBE



Container Terminal

Kobe Airport



Waterfront Areas



Renovated Kobe Port Tower



Glion Arena Kobe





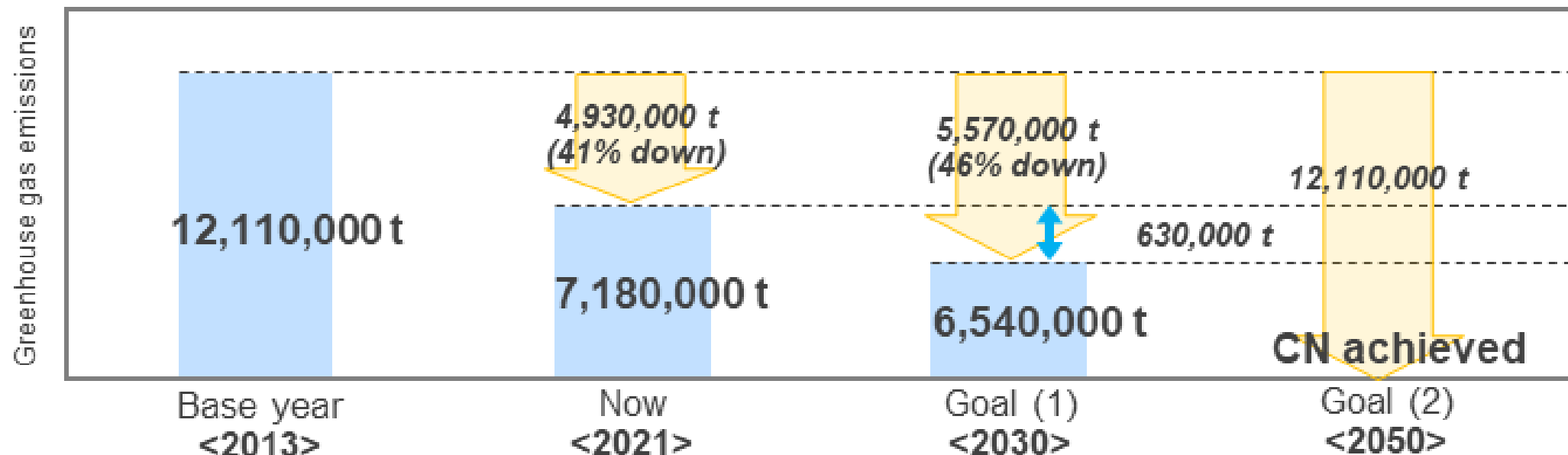
- From 2025, Kobe Airport will start accepting international charter flights.
- Around 2030, international regular flights are scheduled to start.

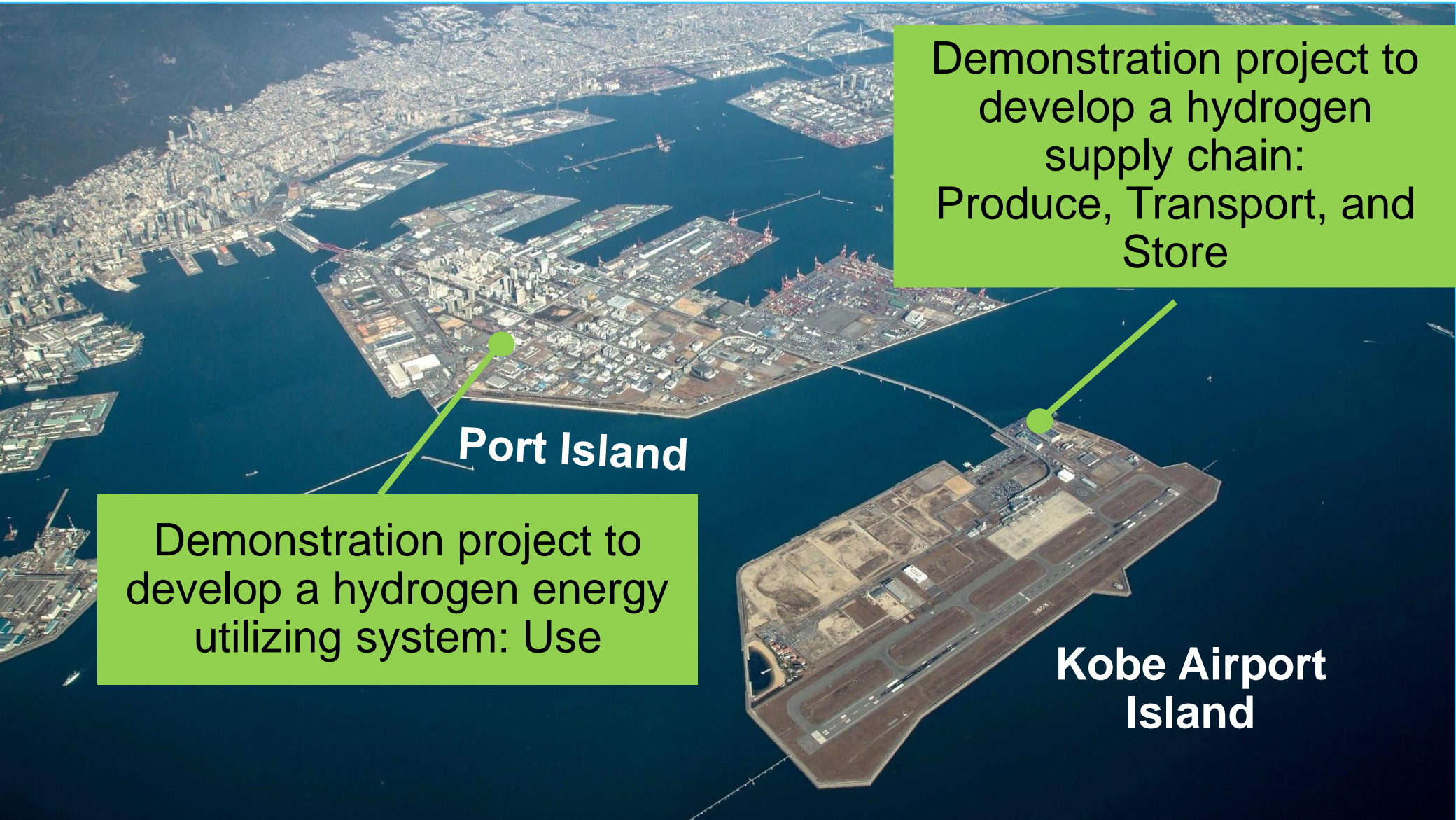


Greenhouse Gas Reduction Targets and Plans

FY 2030 target 46% down from FY 2013

2050 target Achieving carbon neutrality(virtually zero CO₂ emissions)





Demonstration project to develop a hydrogen supply chain:
Produce, Transport, and Store

Port Island

Demonstration project to develop a hydrogen energy utilizing system: Use

Kobe Airport Island



Current CNP Activities at Kobe Port

BE KOBE

Demonstrating technologies to produce, transport, and store hydrogen



NEDO subsidized project

- Hydrogen is produced from unused energy (lignite, or brown coal) in Australia.
- The hydrogen is liquefied into liquefied hydrogen (LH_2) and transported to Japan on a special carrier.
- The project demonstrates the storage of hydrogen in the LH_2 storage tank at Hy touch Kobe.

Technology Research Association

CO₂-free Hydrogen Energy Supply-chain Technology Research Association



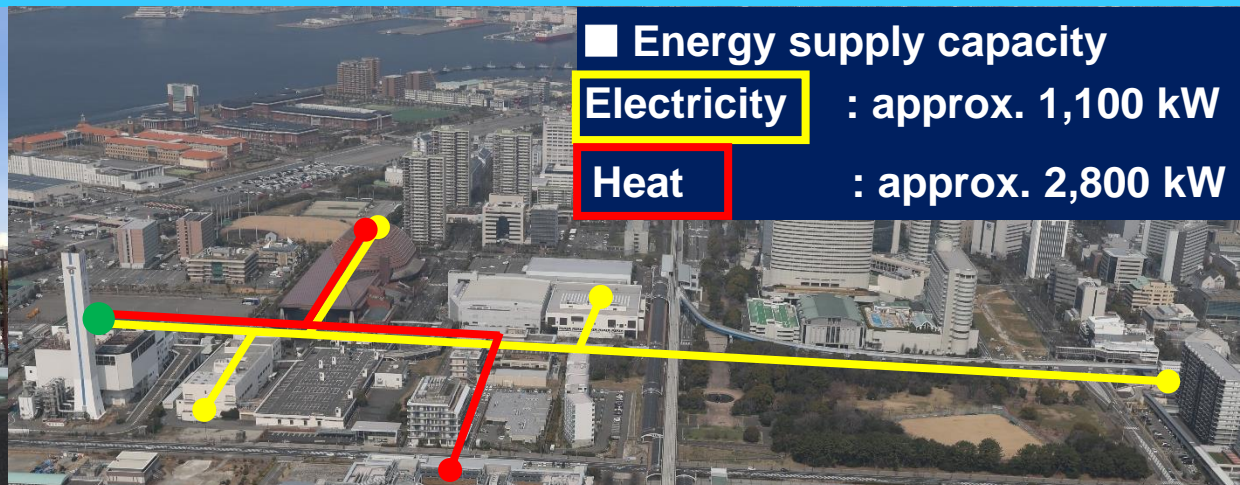
Supports provided by Kobe City

Field support, Public berth development, Raising awareness to encourage social acceptance

Supplying electricity and heat generated by a gas turbine fueled by hydrogen



©Kawasaki Heavy Industries, Ltd.



■ Energy supply capacity
Electricity : approx. 1,100 kW
Heat : approx. 2,800 kW

NEDO subsidized project

The project demonstrates the technology to supply electricity and heat generated by a gas turbine fueled by hydrogen at Kobe Hydrogen CGS Energy Center to nearby Kobe public facilities.

Primary contractors

Kawasaki Heavy Industries, Ltd. and Obayashi Corporation

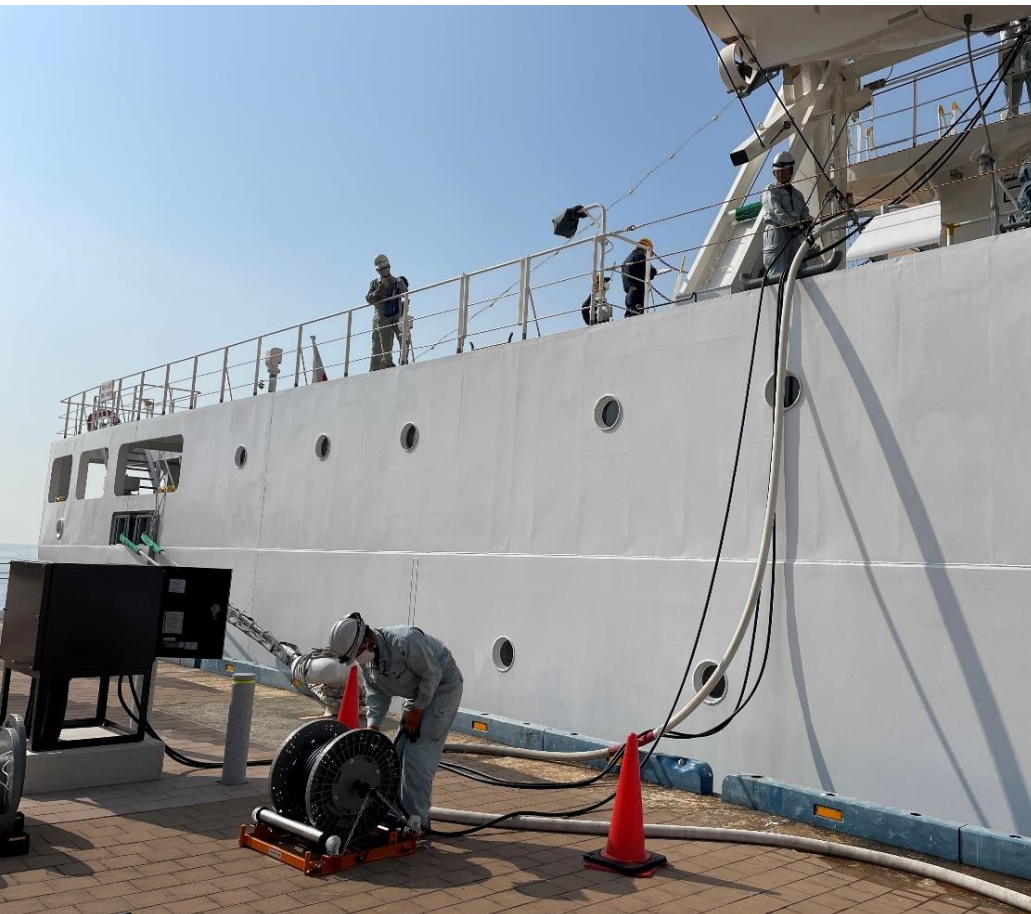
Supports provided by Kobe City

Field support, Coordination with energy suppliers, Raising awareness to encourage social acceptance



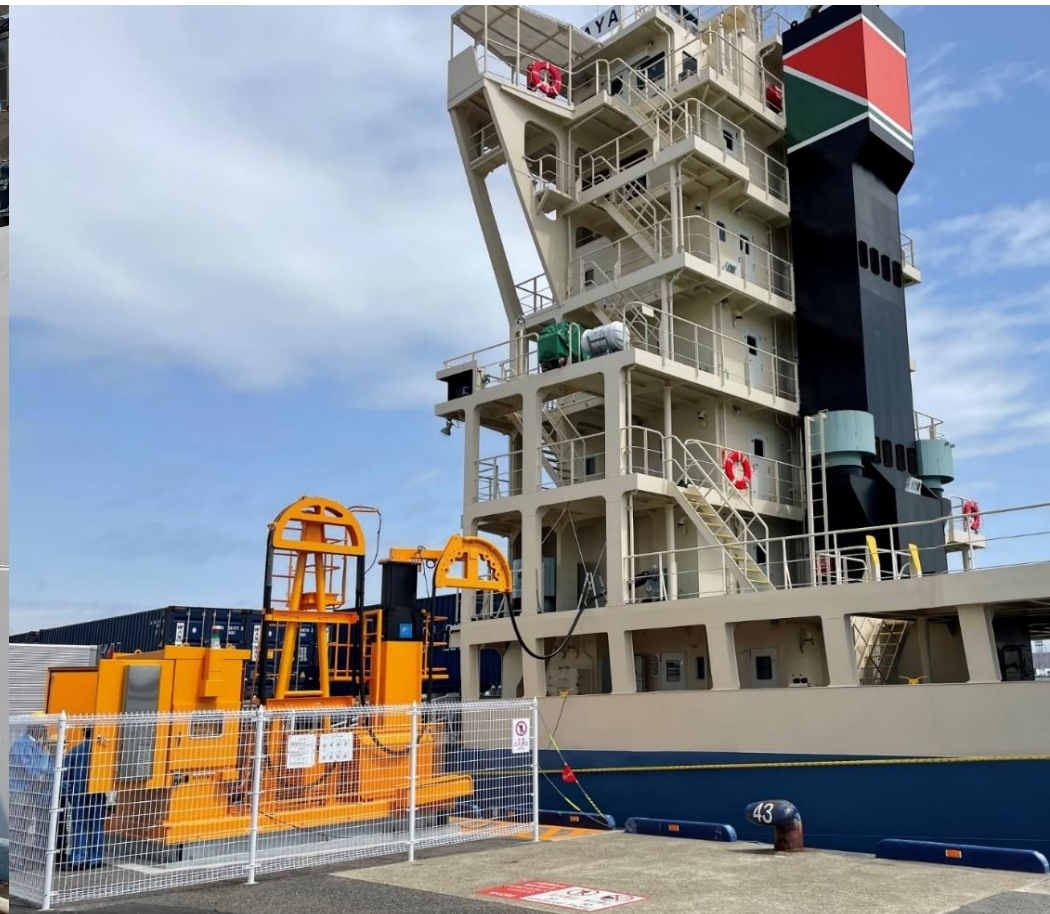
Shinko Jetty No. 1

Onshore power supply to a training sailboat started from November 28, 2023



Shinko East Wharf

Onshore power supply to a coastal container ship started from April 25, 2024



● Activities in FY2024

Incoming/outgoing vessels

- Hydrogen-powered Kobe City service boat
- Electrification of domestic cargo ships

Container terminals and warehouses

- E-methane demonstration project, solar power generation, and LED lighting equipment
- Onshore power supply for ships at Shinko Jetty No. 1 and Shinko East Wharf
- Demonstration of cleaner rubber-tired gantry crane (RTG) by using a hydrogen engine

Incoming/outgoing trucks

- Elimination of congestion at container terminal by using the COMPASS system

New hydrogen-powered service boat



Onshore power supply



Demonstration of hydrogen-fueled RTG



●The IAPH World Ports Conference 2025 in Kobe

■History of the International Association of Ports and Harbors (IAPH)

- IAPH was established in 1952 when Kobe Mayor Haraguchi, as one of the founders, invited the world's major port managers to Kobe and passed a resolution to establish the organization.
- As the year 2025 marks the 70th anniversary of the Association's establishment, we have made a concerted effort to invite the World Port Conference to Kobe, the place where it all began. As a result, the conference will be held in Kobe from October 7 to 9, 2025.



Preparatory conference held at Kobe University in 1952



Group photo taken at the Kobe Chamber of Commerce and Industry

